

DADANCO SECURES THE LARGEST ACTIVE CHILLED BEAM PROJECT IN SYDNEY, AUSTRALIA

In April this year a contract to supply Active Chilled Beam (ACB's) for the refurbishment of AAP Centre in Sydney, was secured. It is one of the largest projects to supply ACB's to date and client chose DADANCO as the supplier of choice.



Overview

The property is located within Sydney's CBD Core precinct and has frontage to Lang, Jamison, Grosvenor and George Streets. The Building consists of 42 levels of office accommodation and basement level carparking. Plans are underway for a major refurbishment of the building, expected to be completed in late 2007.

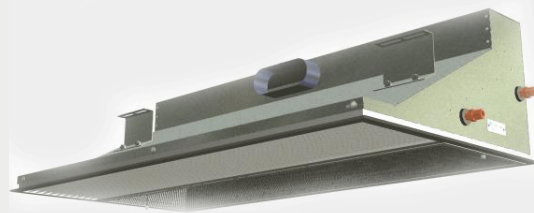
Client - Colonial First State Property

Architects - PTW Architects

Project Manager - Cadence

Consultant - Norman Disney & Young
Mechanical Services

Contractor - Triple M Mechanical Services



Technical Summary

Active Chilled beam Type	ACB50
Perimeter area	9212 m ²
Number of Floors	22
Total Room sensible cooling capacity	900 kW
Total primary air flow	25135 L/s
Average primary air flow per m ²	2.73 L/s m ²
Average Total air flow per m ²	10.98 L/s m ²
Rooms sens capacity / primary air flow	35.81 W/L/s
Primary air temperature	11.6 Deg ° C
Secondary chilled water temperature	14 Deg ° C