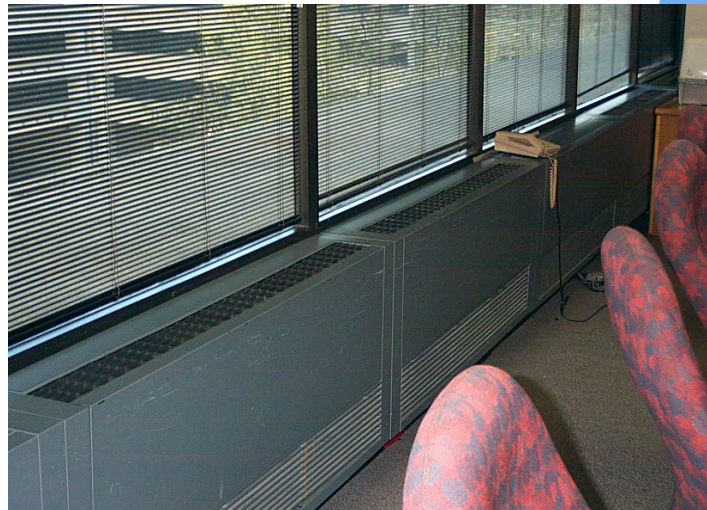


Induction Terminal Unit - FM30 & HM30

Dadanco Starline™ Floor and Bulkhead Mounted Induction Terminal Units are well suited to hidden active chilled beam applications for replacement of older induction units or in new design projects. Dadanco Starline™ FM30 & HM30 Induction Terminal Units provide efficient, effective and whisper-quiet air conditioning for almost any perimeter zone application at lower static pressures than older induction units.



HM30 Bulkhead Mounted Induction Units



FM30 Floor Mounted Induction Units

Induction Terminal Unit Advantages

- Compact dimensions and intrinsically smaller duct sizes offer real savings in ceiling void space requirements for HVAC new construction and refurbishment projects.
- Fan power is dramatically reduced. The low primary air quantity is treated by the AHU and distributed at low pressure. The primary air is typically only 30% of the total air supplied by Dadanco CM10 Induction Terminal Units due to the use of efficient induction technology.
- Secondary air is induced over the secondary heat exchanger, delivering localized cooling, for **NO FAN ENERGY REQUIREMENT**
- FM30 Induction Terminal Units are designed for floor mounted parapet enclosures with return and supply air grilles (by others)
- HM30 Induction Terminal Units are designed for concealed horizontal bulkhead installation with return and supply air grilles (by others)
- Dadanco Induction Terminal Units operate at lower primary air pressures than most conventional induction units
- FM30 & HM30 Induction Terminal Units deliver more cooling capacity using less treated air than any all-air system
- Dadanco Induction Terminal Units offer 2-stage capacity control through control of secondary water flow separate from primary air control
- Noise radiated from Dadanco Induction Terminal Units is very low...
- CM10 Induction Terminal Units require minimal maintenance (no moving parts)

Application Data – FM30 & HM30

COOLING	40 to 250 W/m ²
LENGTH	Unit lengths from 700mm to 1500mm available on request for any application
FEATURES	End or Rear entry primary air connections Condensate Drain tray (Optional) Secondary Air Lint Screen
HEIGHT	380 - 503mm 6, 8 & 10 Tube High Unit Versions
INSULATION	Thermal insulation for the primary air plenum is available
GRILLE	Suitable for use with low resistance individual or continuous Sidewall grilles (supplied by others)
CONTROLS	Units can be controlled individually or in groups of units

APPLICATIONS:

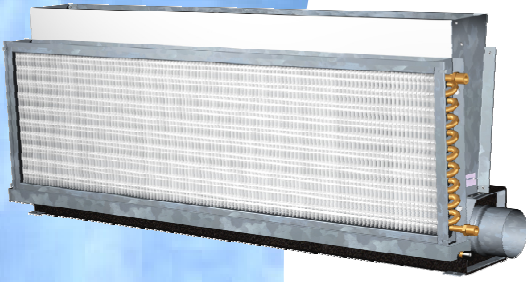
- Dadanco Induction Terminal Units FM30 & HM30 are designed specifically for perimeter zone installations in:
- High Efficiency Office Buildings & HVAC Refurbishment Projects
 - Induction unit replacements
 - Schools and Institutional Buildings
 - Airports

Proudly Australian

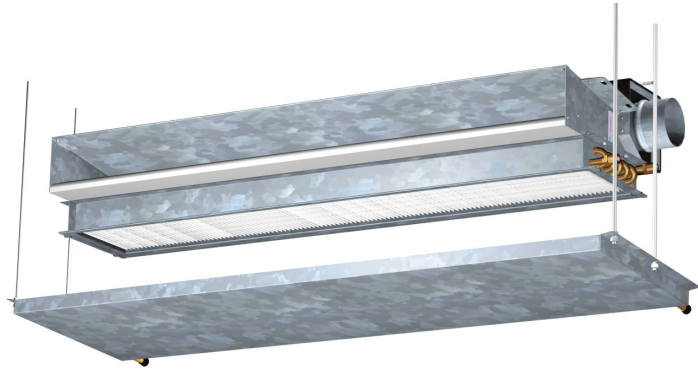


Owned, Manufactured & Supported

Typical FM30 & HM30 Induction Terminal Units



FM30 Floor Mounted Unit



HM30 Bulkhead Mounted Unit

General Product Technical Data

MODEL	Coil Finned Length	Air Plenum Length	H = Unit Height (mm)			Unit Width (W)	Primary Air Flow Range (≤250Pa)	Sensible Cooling Capacity Range
	(mm)	(mm)	6 Tube	8 Tube	10 Tube	(mm)	(L/s)*	(W)
FM & HM30-0700	700	750	379	443	506	249	6.0 ~ 29.6	296 ~ 1270
FM & HM30-0800	800	850					6.0 ~ 34.2	304 ~ 1430
FM & HM30-0900	900	950					6.4 ~ 37.6	310 ~ 1590
FM & HM30-1000	1000	1050					6.7 ~ 42.1	330 ~ 1750
FM & HM30-1050	1050	1100					7.1 ~ 44.4	348 ~ 1830
FM & HM30-1100	1100	1150					7.4 ~ 46.7	367 ~ 1905
FM & HM30-1200	1200	1250					8.1 ~ 50.1	403 ~ 2045
FM & HM30-1300	1300	1350					8.8 ~ 54.7	438 ~ 2185
FM & HM30-1400	1400	1450					9.6 ~ 59.2	473 ~ 2325
FM & HM30-1500	1500	1550					10.3 ~ 63.8	507 ~ 2475

NOTE: Nominal cooling capacities @ 24°C room air, 12°C primary air, 13°C Secondary Chilled Water & 0.09 L/s Secondary Water Flow
 * Represents range of primary air flows at all pressures ≤250Pa

Different performance results can be achieved for varying secondary water flow rates, entering water temperatures, primary air conditions and primary air static pressures.

For selections at conditions other than those nominated above please contact DADANCO for further assistance.

New Technologies

Dadanco's Starline™ multi-lobe high performance induction nozzles and superior fluid dynamics design are combined into Dadanco Induction Terminal Units for improved performance and lower noise characteristics.

Rather than relying on high primary air velocities and pressures as with older induction units, Dadanco Induction Terminal Units require less primary air pressure for delivery of equal or greater amounts of primary air to induce higher rates of secondary room air through the secondary cooling coil; delivering improved cooling performance in one simple under-sill or bulkhead mounted package.

All Dadanco Active Chilled Beams incorporate Starline™ Multi-Lobe induction nozzles for enhanced performance per liter/second of primary air delivered.

DISCLAIMER

While every effort is made to ensure the details contained herein are kept up to date, in the interests of ongoing product development, Dadanco reserves the right to alter the information without notice

STARLINE

Dadanco Pty Ltd
 89 South Road
 HINDMARSH, SA 5007
 Australia
 Telephone +61 8 8346 3588
 Facsimile +61 8 8346 7822
 info@dadanco.com.au

Proudly Australian



Owned, Manufactured & Supported

DADANCO
 Breathing Life Into Your Building

www.dadanco.com.au